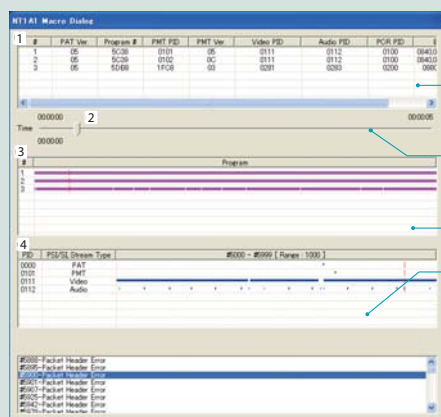


With NT1A1, the packet distribution status in the file can be checked from a macro perspective and table display of packets from a micro perspective are linked. This application actively supports a wide range of users handling TS data to check that files conform to specifications, check parameter settings, check the positions of error packets, and determine the reasons why images or sound stop.

## Main Features

### 1 Graphical user interface that allows the data configuration to be easily understood

The previous version of TS Analyzer displays the data structure in a one-dimensional tree format (schematic diagram), but TS Analyzer NT1A1 can simultaneously display a macro window in which the structure of the entire TS data file can be checked and a micro window in which the details of the data in each TS packet can be checked. By using these two windows, information arranged from various perspectives can be checked at the same time. Also, as the macro window and micro window are synchronized, the relationship between the overall data configuration and the detailed packet data is easy to comprehend.

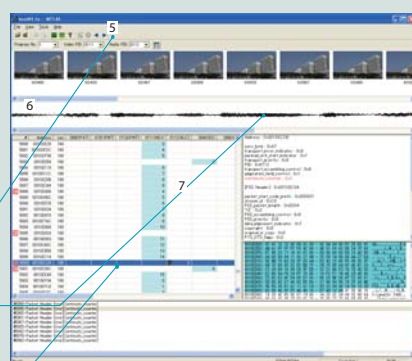


[Macro window display]

1. Table display function for PIDs associated to each program
2. Slide bar function for specifying the position to be checked in the file
3. Program distribution display function
4. Stream distribution display function

[Micro window display]

5. Function for specifying the position to be checked in the file
6. Thumbnails (H.264/AVC), function for displaying sound wave patterns (AAC LC)
7. Table display function for packets



### 2 Easy to check and manage error information

When errors occur, the error information is displayed in list format so that the position, number, and content of the errors can be easily identified. By double clicking on an error in the list, it is possible to jump to the error position and immediately acquire the details of the error packet and the packets on either side of the error packet. The error list can also be saved to a text file thus simplifying the management of error information.

### 3 Packet search function

In the micro window, it is possible to jump to a position specified not only by error information but also by an address or packet number, thus making it easy to check packets or image content. It is also possible to skip any number of packets from the displayed packet data by using the buttons in the window. In the macro window, the position in the file can be roughly set using the slide bar.

### 4 Support for large files

Because of background processing, data can be checked even while files are being read, thus making it possible to check large files without stress.

Produced by



**NIKON SYSTEMS INC.**  
[http://www.nikon-sys.co.jp/products/index\\_en.htm](http://www.nikon-sys.co.jp/products/index_en.htm)

#### System Requirements

CPU	Pentium4 3.0 GHz or higher
Operating System	Windows XP English version with SP2 or later installed
Memory	2GB or more recommended

#### Main Specifications

Supported Format	MPEG-2 TS
Video Codec	H.264/AVC (to High422 Profile) MPEG-2 (to MP@HL) (for MPEG-4 files, only the stream type is recognized)
Audio Codec	AAC LC (Low Complexity)

## Distributed by Hitachi High-Technologies Corporation

#### North America

Monica Degnan(West) +1 408 982 4638  
 monica.degnan@hitachi-hita.com  
 Steve Keough(East) +1 847 273 4350  
 steve.keough@hitachi-hita.com

#### Germany

Michael Oelmann +49 2151 6435134  
 m.oelmann@hht-eu.com

#### France

Ludovic Plante +33 1 39 26 01 60  
 l.plante@hht-eu.com  
 Pierre Inisan +33 1 39 26 01 74  
 p.inisan@hht-eu.com

#### UK

Malcolm Harland +44 1455 221188  
 malcolm@gpl-uk.co.uk

#### Korea

Mitsuhiro Akeboshi +82 2 773 5692  
 akeboshi-mitsuhiro@hitachi-hitec-kr.com

#### Japan

Ryohei Tsukimori +81 3 3504 7581  
 tsukimori-ryohei@nst.hitachi-hitec.com  
 Masayuki Hamajima +81 3 3504 7600  
 hamajima-masayuki@nst.hitachi-hitec.com