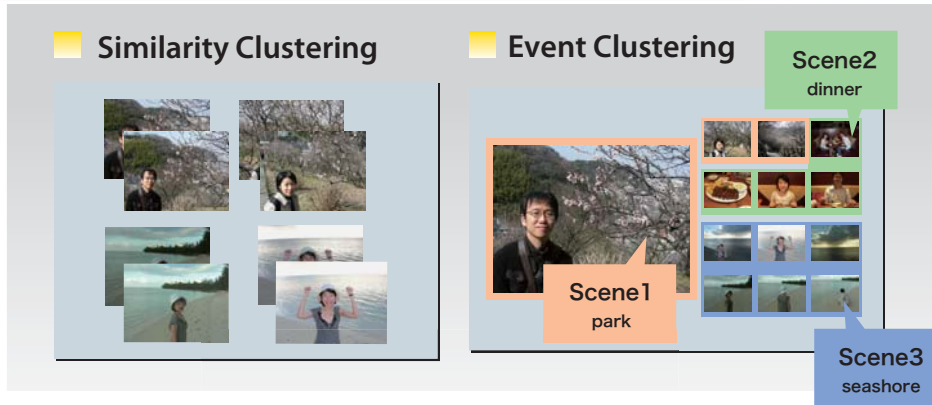




Image Recognition and Classification Engine for Embedded Systems

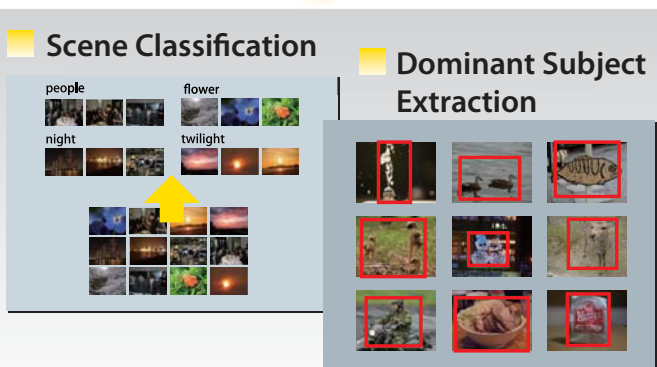


Clustering



Recognition

Assessment

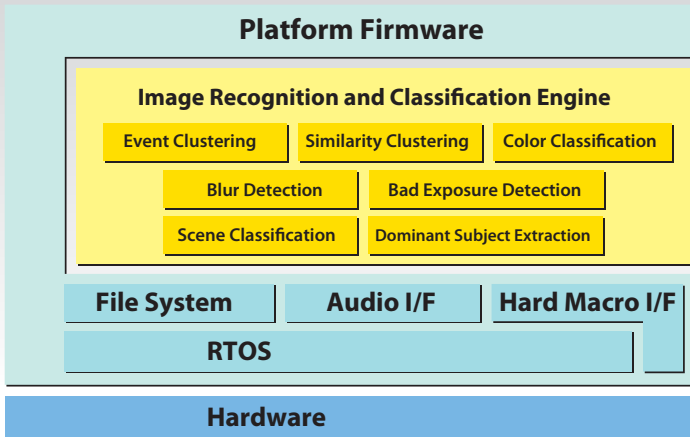


Functions

Category	Function	Description
Clustering	Event Clustering	Divides an image set into groups of temporary event
	Similarity Clustering	Divides an image set into groups which consists of similar images
	Color Classification	Assigns the most representative color by the analysis of color distribution
Assessment	Blur Detection	Finds blurry caused by camera shake for a given image
	Bad Exposure Detection	Finds obvious over/under exposure for a given image
Recognition	Scene Classification	Assigns a scene category by image analysis
	Dominant Subject Extraction	Finds an area where dominant subject exists in a given image



Example of System Configuration



Specifications

Compatible OS Requirement*	μITRON, Linux, Windows mobile, and others
Binary Size	CPU Over 120MHz, Memory Over 5MB
Image Format***	About 150KB**
	YUV, RGB

* Depends on number of images and size. Please ask us in detail.

** Depends on system configuration. Please ask us in detail.

*** Please ask us on other image formats.



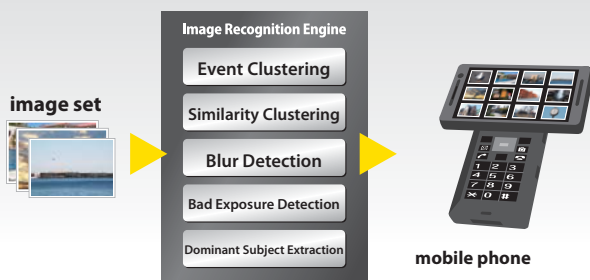
Targets

home printer, digital photo frame, digital still camera, mobile phone, self printing terminal, and others



Application Examples

Image Browser for Small Device



Digital Photo Frame



Nikon Systems Inc.

Head Office

Queen's Tower B 16F, 2-3-3 Minatomirai, Nishi-Ku, Yokohama, Kanagawa Pref. 220-6116, JAPAN

<http://www.nikon-sys.co.jp>

Contact Us

3rd System Division

tel: +81-45-682-0148 e-mail: IRE_info@nikon-sys.co.jp

Specifications and equipment are subject to change without any notice or obligation on the part of the manufacturer. July 2009 (C) Nikon Systems Inc.

Windows and Windows mobile are either registered trademarks or trademarks of Microsoft Corporation in the United States and/or other countries.

TRON is an abbreviation of "The Real-time Operating system Nucleus", ITRON is an abbreviation of "Industrial TRON", μITRON is an abbreviation of "Micro Industrial TRON."